

Moxi™ B-R, Moxi™ B-RT hearing aid guide

Powered by **Blu**



A Sonova brand

unitron™ Love the
experience

This user guide applies to the following models:

Hearing aids



Moxi™ B9-R

Moxi™ B9-RT

Moxi™ B7-R

Moxi™ B7-RT

Moxi™ B5-R

Moxi™ B5-RT

Moxi™ B3-R

Moxi™ B3-RT

Moxi™ B1-R

Moxi™ B1-RT

Moxi™ B-R FLEX:TRIAL

Moxi™ B-RT FLEX:TRIAL

Non wireless charging accessory



Unitron Charger Moxi R



Your hearing aid & charger details

- ① If no box is checked and you do not know the model of your hearing aid or charging accessories, please ask your hearing care professional.
- ① The hearing aids described in this user guide contain a built-in and non-removable rechargeable lithium-ion battery.
- ① Please also read safety information regarding handling rechargeable hearing aids (chapter 8).

Hearing aid models

- ☐ Moxi B-R (9/7/5/3/1)
- ☐ Moxi B-RT (9/7/5/3/1)
- ☐ Moxi B-R FLEX:TRIAL
- ☐ Moxi B-RT FLEX:TRIAL

Earpieces

- ☐ Dome
- ☐ SlimTip
- ☐ cShell

Charging accessory

- ☐ Unitron Charger Moxi R

Your hearing aids

Hearing care professional: _____

Telephone: _____

Model: _____

Serial number: _____

Warranty: _____

Program 1 is for: _____

Program 2 is for: _____

Program 3 is for: _____

Program 4 is for: _____

Date of purchase: _____

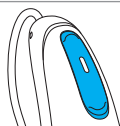
Quick reference

Low battery warning



2 beeps every
30 minutes

Multi-function button with indicator light

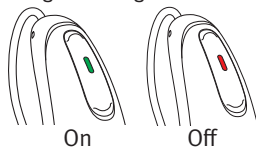


Turning hearing aids on/off

Press and hold the lower part of the button on each hearing aid for 3 seconds until the indicator lights change.

On: Indicator light is temporarily solid green

Off: Indicator light is temporarily solid red



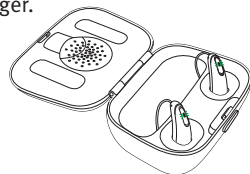
① Before using your hearing aids for the first time, it is recommended to charge them for 3 hours.

Charging your hearing aids

Place the hearing aids in the charger.

Charging: Slow blinking indicator light

Fully charged: Solid green indicator light



Thank you

Thank you for choosing these hearing aids.

Unitron is a hearing solution company that believes people should feel really good about the entire hearing care experience, start to finish. Our ingenious products, technologies, services and programs offer a level of personalization you can't get anywhere else. Get ready to

Love the experience.™

Please read the User guide carefully to make sure that you understand and get the best out of your hearing aids. Training is not required for handling of this device. A hearing care professional will help set up the hearing aids to your individual preferences during the fitting / sales consultation.

For more information regarding features, benefits, setup, use and maintenance or repairs of your hearing aid and accessories – contact your hearing care professional or manufacturer representative. Additional information can be found in the specification sheet of your product.

www.unitron.com

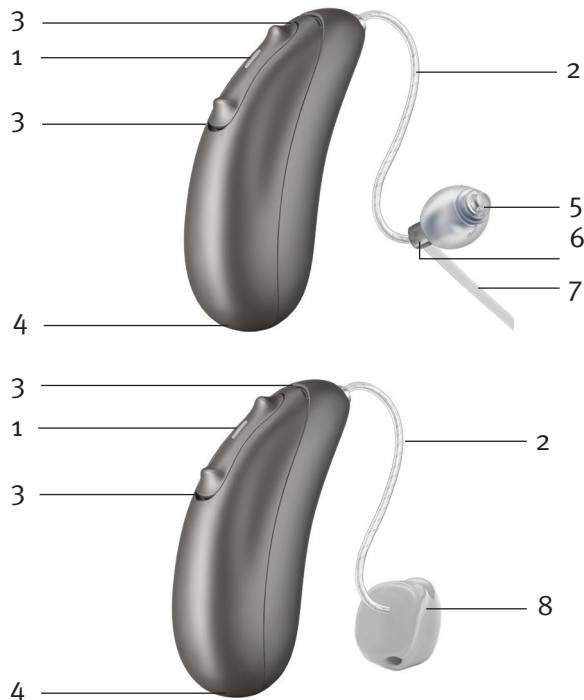
Table of contents

1. Your hearing aids at a glance	2
2. Turning your hearing aids on and off	5
3. Putting your hearing aids on your ears.....	6
4. Operating instructions	8
Your rechargeable hearing aids.....	12
Charging your hearing aids.....	14
Pairing your mobile phone with your hearing aids	19
Using your mobile phone with your hearing aids	22
TV Connector	27
Tinnitus masker.....	28
Flight mode.....	29
Assistive listening devices	30
5. Caring for your hearing aids	31
6. Accessories	34
7. Troubleshooting guide.....	36
8. Important safety information.....	43
Tinnitus masker	64
9. Operating, transport and storage conditions	67
10. Information and explanation of symbols	68
11. Compliance information.....	72
12. Warning to hearing aid dispensers (to comply with the U.S. Food and Drug Administration (FDA) regulations)	76

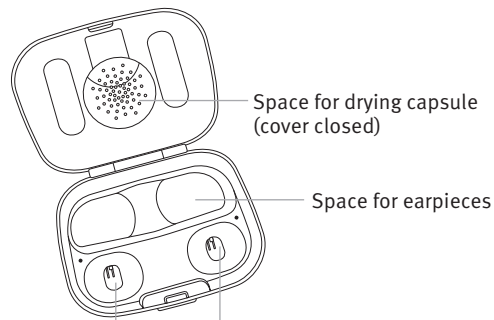
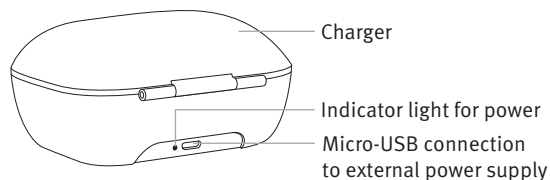
1. Your hearing aids at a glance

- 1 **Multi-function button with indicator light** - switches between listening programs, changes the volume level, and accepts or rejects mobile phone calls depending on your customized fitting
- 2 **Wire** - connects the speaker unit to your hearing aids
- 3 **Microphones** - sound enters your hearing aids through the microphones
- 4 **Charging contacts**
- 5 **Dome** - holds the speaker unit in place in your ear canal
- 6 **Speaker unit** - amplifies the sound and sends it directly into the ear canal
- 7 **Retention piece** - helps prevent the dome and speaker unit from moving out of the ear canal
- 8 **Custom mold** - holds the hearing aids in place

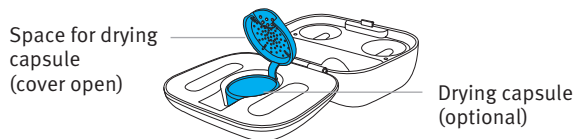
Moxi B-RT / Moxi B-R hearing aids



Charger

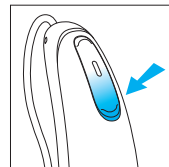


Hearing aid charging slots with left/right indicators

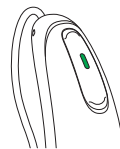


2. Turning your hearing aids on and off

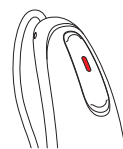
Your hearing aids will turn on automatically when removed from the charger. To turn hearing aids on and off when not using the charger, press and hold the lower part of the button on each hearing aid for 3 seconds until the indicator lights change.



On: Indicator light is temporarily solid green



Off: Indicator light is temporarily solid red



On

Off

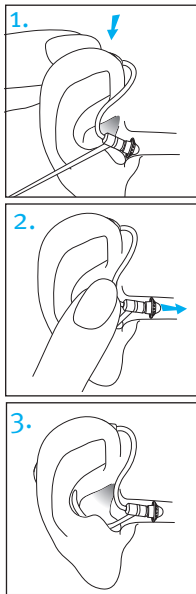
- ① Before using your hearing aids for the first time, it is recommended to charge them for 3 hours.
- ① When you turn your hearing aids on you may hear a start-up melody.

3. Putting your hearing aids on your ears

Your hearing aids will be color-coded with a marking on the outside of the hearing aid: red = right ear; blue = left ear.

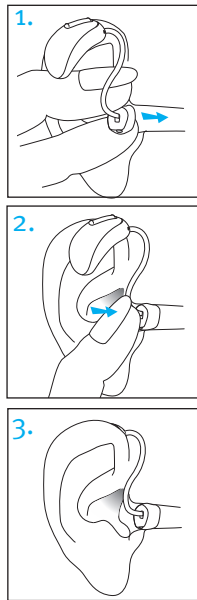
Hearing aids with domes

1. Place the hearing aid over the top of your ear.
2. Hold the wire where it attaches to the dome and gently push the dome into your ear canal. The wire should lie flush against your head and not stick out.
3. If there is a retention piece, place it in your ear so it rests at the bottom of the opening of your ear canal.



Hearing aids with custom molds

1. Hold the custom mold between your thumb and index finger. The opening should be pointing in towards your ear canal with the hearing aid resting above your ear.
2. Carefully insert the custom mold into your ear. The mold should fit into your ear snugly and comfortably.
3. Place the hearing aid over the top of your ear.



Labeling

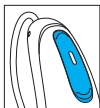
The serial number and year of manufacture are located under the colored hearing aid marking.

4. Operating instructions

Your hearing aids come with a multi-function button that allows you to further adjust them. You may also use the multi-function button and tap control to accept and reject calls to your paired mobile phone. You may also use the optional Remote Control or Remote Plus app to control your hearing aids.

- ① These instructions describe the default multi-function button or tap control settings. Your hearing care professional may change the functionality. See your hearing care professional for more information.

Multi-function button



The multi-function button on your hearing aids can be both a volume control and a program control.

□ Program control

Each time you push the upper part of the button on either hearing aid for longer than 2 seconds, you will move to the next hearing aid program.

Your hearing aids beep to indicate which program you are in.

Program setting	Beeps	
Program 1 (e.g. automatic program)	♪	1 beep
Program 2 (e.g. speech in noise)	♪♪	2 beeps
Program 3 (e.g. telephone)	♪♪♪	3 beeps
Program 4 (e.g. music)	♪♪♪♪	4 beeps

Please see the front of this booklet for a listing of your personalized programs.

□ Volume control

To adjust the amount of sound amplified in your environment:

- Push the upper part of the hearing aid button to increase the volume, and
- Push the lower part of the hearing aid button to decrease the volume

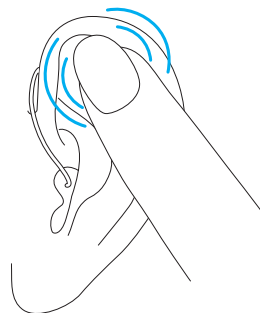
As you change the volume, your hearing aids will beep.

Volume setting	Beeps
Suggested volume level	♪ 1 beep
Turning volume up	♪ short beep
Turning volume down	♪ short beep
Maximum volume level	♪♪ 2 beeps
Minimum volume level	♪♪ 2 beeps

Tap control

If paired with a Bluetooth enabled device, multiple functions can be accessed using tap control e.g. accept/end phone call, pause/resume streaming, start/stop voice assistant.

To use tap control tap the top of your ear twice



Your rechargeable hearing aids

Battery information

- ① Before using your hearing aids for the first time, it is recommended to charge them for 3 hours.
- ① These hearing aids contain a built-in and non-removable rechargeable lithium-ion battery.

Two long beeps indicate the hearing aid battery is low. You have approximately 60 minutes before you have to charge the hearing aids (this can vary depending on the hearing aid settings).

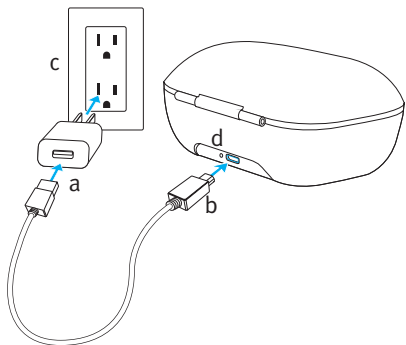
If you can't hear the low battery warning, your hearing care professional can change its pitch or loudness.

Charging information

- ① The hearing aids must be dry before charging.
- ① Charge your hearing aids every night. If you hear the low battery warning, place your hearing aids in the charger.
- ① Please ensure to charge and use the hearing aids within operating temperature range: +5° to +40° Celsius (41° to 104° Fahrenheit).
- ① If the charger is removed from the power source during charging, the hearing aids will turn on and will start to discharge. Ensure the charger remains powered while the hearing aids are in the charger.

Charging your hearing aids

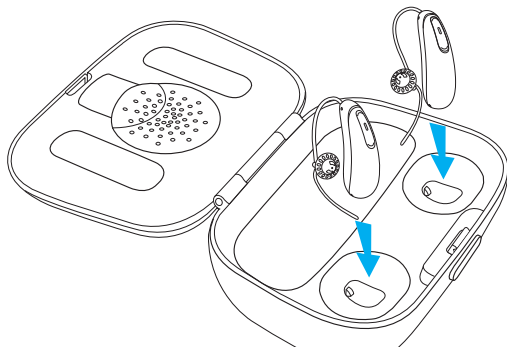
1) Connect to the power supply



- a) Plug the larger end of the charging cable into the power supply.
- b) Plug the smaller end into the micro-USB port on the charger.
- c) Plug the power supply into a power outlet.
- d) The charger indicator light is green when the charger is connected to the power supply.

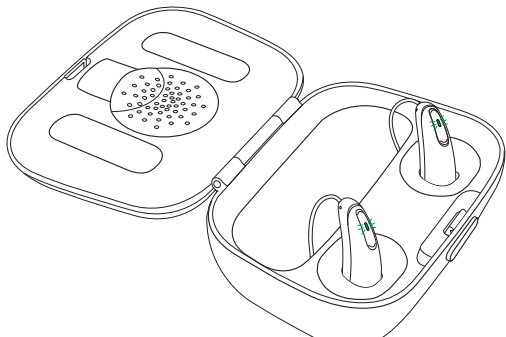
2) Insert the hearing aids

Insert the hearing aids into the charging slots. Make sure the left and right hearing aid markings match the left (blue)/right (red) indicators next to the charging slots. The hearing aids will automatically switch off when inserted into the charger.



3) Watch the hearing aid indicator lights

The indicator light will slowly blink until the hearing aids are fully charged. When fully charged the indicator light will be solid green.



The charging process will automatically stop when the batteries are fully charged, so the hearing aids can be safely left in the charger. It can take up to 3 hours to charge the hearing aids. The charger cover can be closed while charging.

Understanding the hearing aid indicator lights

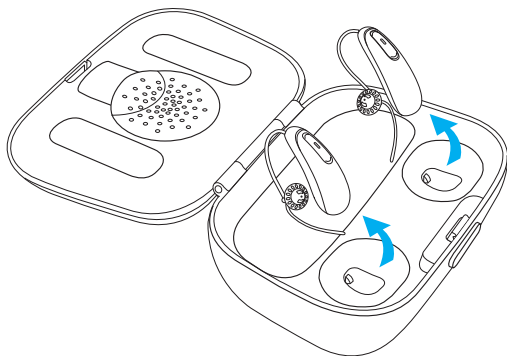
The below table indicates battery charging time from fully depleted.

Indicator light	Percentage charged	Charging time
● ● ●	0-10%	
● ● ●	11-80%	30 min (30%) 60 min (50%) 90 min (80%)
● ● ●	81-99%	
■	100%	3h

4) Remove the hearing aids from the charger

Remove the hearing aids from the charging slots to turn them on.

- ① Do not pull the wires to remove the hearing aids from the charger as this can damage the wires.
- ① Tilt hearing aids slightly toward the lid when removing them.



Pairing your mobile phone with your hearing aids

1. On your phone, go to your settings menu to ensure **Bluetooth®** is on and to search for Bluetooth enabled devices.
 2. Turn your hearing aids on. Your hearing aids will remain in pairing mode for 3 minutes.
 3. Your phone will show a list of found Bluetooth enabled devices. Select your hearing aid from the list to simultaneously pair both hearing aids. You will hear a melody when your phone has been successfully paired to your hearing aids.
- ① It is only necessary to perform the pairing procedure once with each Bluetooth enabled phone.
 - ① Consult your phone user guide for instructions on pairing a Bluetooth device with your phone.

Bluetooth® is a registered trademark owned by the Bluetooth SIG, Inc. and used under license by Unitron.

Connecting to your mobile phone

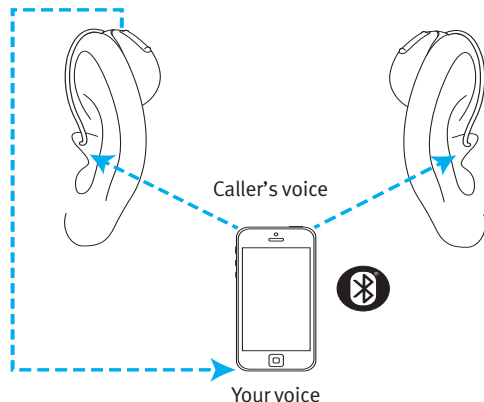
After your hearing aids have been paired to your phone, they will automatically connect again when your phone and hearing aids are turned on and in range. This can take up to 2 minutes.

- ① The connection will be maintained as long as the phone remains on and within a range of up to 10 m (30 ft).
- ① To switch a call between your hearing aids and the speaker on your mobile phone, select the audio source you would like from your phone. If you are not sure how to do this, consult the instruction manual that came with your mobile phone.

Phone calls with a mobile phone

Your hearing aids allow direct communication with Bluetooth enabled devices. When paired and connected to a phone, you will hear the caller's voice directly in your hearing aids. Your hearing aids pick up your voice through their own microphones. Two active Bluetooth devices such as a phone can be connected to your hearing aids, with support for additional pairings.

- ① You do not need to hold your mobile phone close to your mouth, your voice is transmitted through the hearing aids to your mobile phone.



Using your mobile phone with your hearing aids

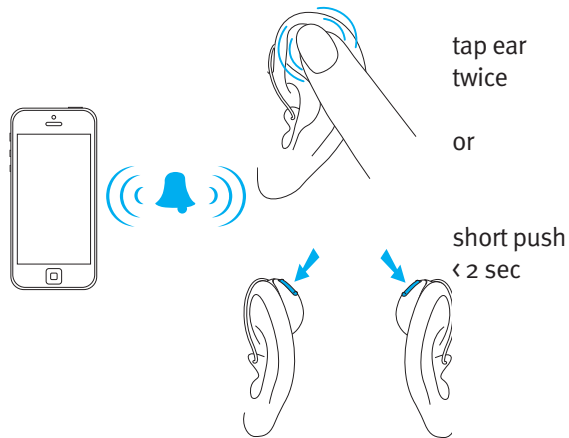
Making a phone call

Start a call on your paired mobile phone as you normally would. You will hear the audio through your hearing aids. Your hearing aids pick up your voice through their own microphones.

Accepting a mobile phone call

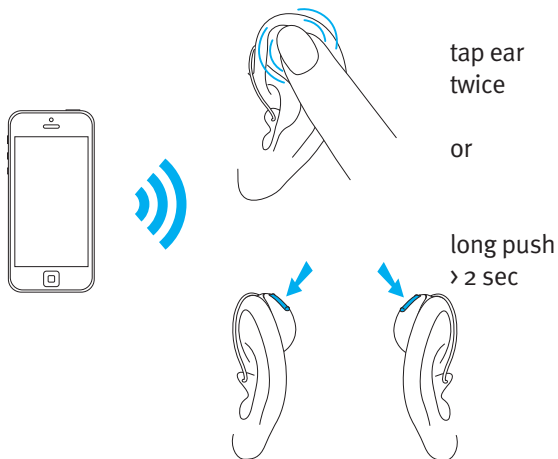
When receiving a call, an incoming call notification will be heard in the hearing aids.

The call can be accepted by tapping the top of your ear twice, or with a short push of less than 2 seconds on either the upper or lower part of the button on either hearing aid. Alternatively, accept the call on your phone as you normally would.



Ending a phone call

End a call by tapping the top of your ear twice, or by holding down the upper or lower part of the button on either hearing aid for more than 2 seconds. Alternatively, end the call on your phone as you normally would.



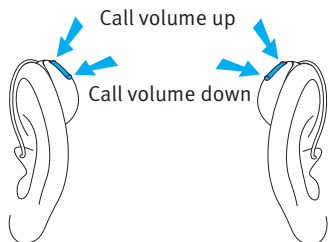
Rejecting a phone call

An incoming call can be rejected by holding down the upper or lower part of the button on either hearing aid for more than 2 seconds. Alternatively, reject the call on your phone as you normally would.

Adjusting volume balance between mobile phone calls and your environment

During a call using a paired mobile phone:

- Push the upper part of the hearing aid button to increase the call volume and decrease the volume of sounds in your environment
- Push the lower part of the hearing aid button to decrease the call volume and increase the volume of sounds in your environment

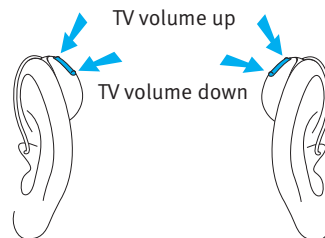


TV Connector

Adjusting volume balance between the TV and the sounds in your environment

While listening to TV sound through the TV Connector accessory:

- Push the upper part of the hearing aid button to increase the TV volume and decrease the volume of sounds in your environment
- Push the lower part of the hearing aid button to decrease the TV volume and increase the volume of sounds in your environment



Tinnitus masker

If your hearing care professional has configured a tinnitus masker program, you can adjust the tinnitus masker level while you are in the tinnitus masker program. To adjust the noise level:

- Push the upper part of the hearing aid button to increase the tinnitus masker, and
- Push the lower part of the hearing aid button to decrease the tinnitus masker

Remote Plus app:

- Tap the advanced features button where you can adjust the tinnitus masker volume up or down

As you change the level, your hearing aids will beep.

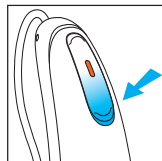
Flight mode

Your hearing aids operate in the frequency range of 2.4 GHz–2.48 GHz. When flying, some airlines require all devices to be switched into flight mode. Entering flight mode will not disable normal hearing aid functionality, only the Bluetooth connectivity functions.

Entering flight mode

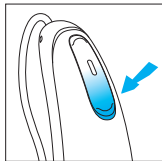
To disable the Bluetooth wireless function and enter flight mode:

With the hearing aid turned off, push and hold the lower part of the button for 7 seconds until the solid orange light appears. Then release the button.



Exiting flight mode

To enable the Bluetooth wireless function and to exit flight mode: Switch the hearing aid off and then on using the lower part of the hearing aid button.



Assistive listening devices

Listening in public places

Telecoils pick up electromagnetic energy and convert it into sound. Your hearing aids may have a telecoil option that can help you listen in public places equipped with telecoil compatible assistive listening devices such as a loop system. When you see this symbol, a loop system is present and may be compatible with your hearing aids. Please contact your hearing care professional for more information on loop systems.



5. Caring for your hearing aids

Protecting your hearing aids

- Diligent and routine care of your hearing aids and charger contribute to outstanding performance and a long service life. To ensure a long service life, Sonova AG provides a minimum of a five year service period after phase out of the respective hearing aid.
- Always remove your hearing aids when using hair care products. The hearing aids can become clogged and cease to function properly.
- Do not wear your hearing aids in the bath or shower or immerse them in water.
- If your hearing aids do become wet, do not attempt to dry them in an oven or microwave. Do not adjust any controls.
- Protect your hearing aids from excessive heat (hair dryer, vehicle glove box or dashboard).
- Ensure you do not twist or squeeze the wires when your hearing aids are placed in their case.
- Do not drop your hearing aids or knock them against hard surfaces.

Cleaning your hearing aids

Use a soft cloth to clean your hearing aids at the end of each day. Regular cleaning of the microphone ports with the supplied cleaning brush will ensure that your hearing aids will maintain their sound quality. Your hearing care professional can demonstrate this for you. Place the hearing aids in the charger overnight.

- ① Ear wax is natural and common. Ensuring your hearing aids are free of ear wax is an important step in your daily cleaning and maintenance routine.
- ① Never use alcohol to clean your hearing aids, earmolds or domes.
- ① Do not use sharp tools to dislodge ear wax. Sticking household items into your hearing aids or custom molds can seriously damage them.

Cleaning your custom molds and domes

Clean the domes and molds on the outside daily with a damp cloth. Avoid getting any water in and around the speaker units and custom molds.



- ① The wires, speakers, domes or custom molds should never be rinsed or submerged in water as water drops may block sound or damage the electrical components of the hearing aids.

Domes should be replaced by your hearing care professional every 3-6 months or when they become stiff, brittle, or discolored.

If your molds require further cleaning, the speaker waxguard may be plugged and require replacing. See your hearing care professional.

6. Accessories

TV Connector

The TV Connector is an optional accessory that sends sound from your TV directly to your hearing aids. The TV Connector can also transmit sound from stereo systems, computers and other audio sources.

Remote Control

The Remote Control is an optional accessory that can be used to control volume level and program changes of the hearing aid.

PartnerMic

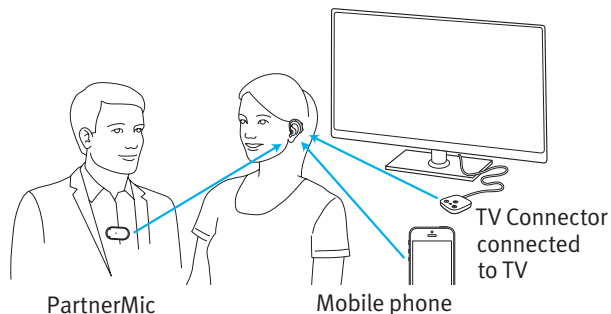
The PartnerMic is an optional accessory that can be used to stream a speaker's voice wirelessly to your hearing aids.

RogerDirect™

Your hearing aids are compatible with Roger accessories. Roger accessories can be used to transmit a voice or sound source wirelessly to your hearing aids.

Connectivity overview

The illustration below shows some of the connectivity options available for your hearing aids.



Please see the user guide that came with your accessory for more information. Please contact your hearing care professional to get a TV Connector, Remote Control, PartnerMic or Roger accessories.

7. Troubleshooting guide

Cause	Possible remedy
-------	-----------------

Issue: will not turn on

Dead battery	Place hearing aids in powered charger
--------------	---------------------------------------

Issue: indicator light blinks fast while charging

Faulty battery	Consult your hearing care professional
----------------	--

Issue: indicator light is off when placed in the charger

Hearing aids not inserted correctly in the charger	Insert the hearing aids correctly into the charger, see “Charging your hearing aids”
Charger not connected to power source	Connect the charger to an external power source, see “Charging your hearing aids”

Cause	Possible remedy
-------	-----------------

Issue: battery does not last the whole day

Hearing aids not fully charged	Place hearing aids in powered charger
Battery needs to be replaced	Consult your hearing care professional to see if a battery replacement is required

Issue: no sound

Not turned on	Turn on
Low/dead battery	Place hearing aids in powered charger
Custom molds/domes blocked with ear wax	Clean custom molds/domes. See “Cleaning your hearing aids.” Consult your hearing care professional
Plugged microphones	Consult your hearing care professional

Cause	Possible remedy
Issue: not loud enough	
Low volume	Turn up volume; see hearing care professional if problem persists
Low battery	Place hearing aids in powered charger
Custom molds/domes not inserted properly	See “3. Putting your hearing aids on your ears.” Remove and reinsert carefully
Change in hearing	Consult your hearing care professional
Custom molds/domes blocked with ear wax	Clean custom molds/domes. See “Cleaning your hearing aids.” Consult your hearing care professional
Plugged microphones	Consult your hearing care professional

Cause	Possible remedy
Issue: intermittent sound	
Low battery	Place hearing aids in powered charger
Issue: two long beeps	
Low battery	Place hearing aids in powered charger
Issue: whistling	
Custom molds/domes not inserted properly	See “3. Putting your hearing aids on your ears.” Remove and reinsert carefully
Hand/clothing near ear	Move hand/clothing away from ear
Poorly fitting custom molds/domes	Consult your hearing care professional

Cause	Possible remedy
-------	-----------------

Issue: not clear, distorted

Poorly fitting custom molds/domes	Consult your hearing care professional
Custom molds/domes blocked with ear wax	Clean custom molds/domes. See “Cleaning your hearing aids.” Consult your hearing care professional
Low battery	Place hearing aids in powered charger

Issue: custom molds/domes falling out of ear

Poorly fitting custom molds/domes	Consult your hearing care professional
Custom molds/domes not inserted properly	See “3. Putting your hearing aids on your ears.” Remove and reinsert carefully

Issue: low volume on landline telephone

Telephone not positioned properly	Move telephone receiver around ear for clearer signal
Hearing aids require adjustment	Consult your hearing care professional

Cause	Possible remedy
-------	-----------------

Issue: mobile phone calls not being heard through hearing aid

Hearing aid is in flight mode	Turn hearing aid off and back on again
Hearing aid is not paired to the phone	Pair your hearing aid to your mobile phone (again)

Issue: indicator lights on the hearing aids are solid red while in charger

Hearing aids are out of their operating temperature range	Ensure the hearing aids are within the operating temperature range of +5° to +40° Celsius (41° to 104° Fahrenheit)
---	--

Issue: difficulty removing hearing aid from the charger

Hearing aids are being pulled straight upwards rather than using rotational removal	Tilt hearing aids slightly toward the lid as you remove them from the charger
---	---

Cause	Possible remedy
Issue: charging does not start	
Charger is not connected to a power supply	Connect the charger to a power supply
Hearing aids are not inserted correctly into the charger	Insert hearing aids correctly into the charger, see “Charging your hearing aids”
Hearing aids do not light up in the charger	Unplug the charger with the hearing aids inserted, and plug the charger back in again
Charge contacts are not clean	Clean charging contacts using cleaning brush or cloth.

Weak on the telephone (Moxi B-RT)

Telephone not positioned properly	Move telephone receiver around ear for clearer signal.
Hearing aid requires adjustment	Consult your hearing care professional

For any problems not listed in the guide, contact your hearing care professional.

8. Important safety information

Please read the relevant safety information and limitations-of-use information on the following pages before using your hearing aid.

Intended use

The intended use of hearing aids is to amplify and transmit sound to the ears and hereby compensate for impaired hearing.

The charger is an accessory to a medical device and has no therapeutic or diagnostic use on its own. It is intended to charge the rechargeable hearing aids.

The Tinnitus feature is intended for use by people with tinnitus who also desire amplification. It provides supplementary noise stimulation which can help defocus the user’s attention from their tinnitus.

Indications

General clinical indications for the use of hearing aids and Tinnitus feature are:

- Presence of hearing loss

- Uni- or bilateral
- Conductive, sensorineural or mixed
- Mild to profound
- Presence of a chronic tinnitus (only applicable for devices which provide the Tinnitus feature).

Contraindications

General clinical contraindications for the use of hearing aids and Tinnitus software are:

- Hearing loss is not in the fitting range of the hearing aid (i.e. gain, frequency response)
- Acute tinnitus
- Deformity of the ear (i.e. closed ear canal; absence of the auricle)
- Neural hearing loss (retro-cochlear pathologies such as absent/non-viable auditory nerve)

The primary criteria for the referral of a patient for a medical or other specialist opinion and / or treatment are as follows:

- Visible congenital or traumatic deformity of the ear;
- History of active drainage from the ear in the previous 90 days;
- History of sudden or rapidly progressive hearing loss in one or both ears within the previous 90 days.
- Acute or chronic dizziness;
- Audiometric air-bone gap equal to or greater than 15 dB at 500 Hz, 1000 Hz and 2000 Hz;
- Visible evidence of significant cerumen accumulation or a foreign body in the ear canal;
- Pain or discomfort in the ear;
- Abnormal appearance of the eardrum and ear canal such as:
 - Inflammation of the external auditory canal,
 - Perforated eardrum;
 - Other abnormalities which the HCP believes are of medical concern

The Hearing care professional may decide that a referral is not appropriate or in the best interests of the patient when the following applies:

- When there is sufficient evidence that the condition has been fully investigated by a medical specialist and any possible treatment has been provided;
- The condition has not worsened or changed significantly since the previous investigation and / or treatment.

If the patient has given their informed and competent decision not to accept advice to seek a medical opinion, it is permissible to proceed to recommend appropriate hearing aid systems subject to the following considerations:

- The recommendation will not have any adverse effects on the patients health or general well being;
- The records confirm that all necessary considerations about the patient's best interests have been made

If legally required, the patient has signed a disclaimer to confirm that the referral advice has not been accepted and that it is an informed decision.

Intended patient population

The intended patient population are people with mild to profound hearing loss (ISO 60115-18) from 8 years of age. The intended patient population for tinnitus software feature are people from 18 years of age.

Intended users:

Person with hearing loss using a hearing aid and their caregivers. Hearing care professional responsible for adjusting the hearing aid. The intended use of hearing aids is to amplify and transmit sound to the ears and hereby compensate for impaired hearing.

Important information


- ① Hearing aids will not restore normal hearing and will not prevent or improve a hearing impairment resulting from organic conditions.
- ① The hearing aids (specially programmed for each hearing loss) must only be used by the intended person. They should not be used by any other person as they could damage hearing.
- ① Hearing aids should only be used as directed by your physician or hearing care professional.
- ① In most cases, infrequent use of hearing aids does not provide full benefit. Once you have become accustomed to your hearing aids, wear your hearing aids everyday all day.
- ① Feedback, poor sound quality, too loud or too soft sounds, inadequate fitting or problems when chewing or swallowing, can be resolved or improved during the fine-


tuning process at the fitting procedure by your hearing care professional.


- ① Any serious incident that has occurred in relation to the device should be reported to the manufacturer representative and the competent authority of the state of residence. The serious incident is described as any incident that directly or indirectly led, might have led or might lead to any of the following:
 - the death of a patient, user or other person
 - the temporary or permanent serious deterioration of a patient's, user's or other person's state of health
 - a serious public health threat


To report an unexpected operation or event, please contact the manufacturer or a representative.


Warnings


 **WARNING:** This device uses a lithium button/coin battery. These batteries are hazardous and can cause severe or fatal injuries in 2 hours or less if they are swallowed or placed inside any part of the body, whether the battery is used or new! Keep out of the reach of children, individuals with cognitive impairment, or pets. If you suspect that a battery was swallowed or placed inside any part of the body, immediately consult your physician without any delay!


 The rechargeable hearing aids contain lithium-ion batteries and the Power Pack contains a lithium-polymer battery that can be taken onto airplanes as carry-on luggage. The Power Pack cannot be placed in the checked-in baggage and can only be placed in the carry-on luggage.

 Your hearing aids operate between 2.4 GHz -2.48 GHz frequency range. When flying please check if flight operator requires devices to be switched into flight mode.

 Changes or modifications to the hearing aid that were not explicitly approved by Sonova AG are not permitted. Such changes may damage your ear or the hearing aid.

 Do not use the hearing aids and charging accessories in explosive areas (mines or industrial areas with danger of explosions, oxygen rich environments or areas where flammable anesthetics are handled) or where electronic equipment is prohibited.

 If you feel pain in or behind your ear, if it is inflamed or if skin irritation and accelerated accumulations of earwax occur, please check with your hearing care professional or physician.

 Allergic reactions to hearing aids are unlikely. However, if you experience itching, redness, soreness, inflammation or a burning sensation in or around your ears, inform your hearing care professional and contact your physician.

⚠ In very rare cases, the dome can remain in your ear canal when removing the hearing tube from the ear. In the unlikely case that the dome does get stuck in your ear canal, it is strongly recommended to see a physician for safe removal. To prevent pushing the dome towards the eardrum, never try to re-insert the speaker into the ear canal.

⚠ Hearing programs in the directional microphone mode reduce background noises. Please be aware that warning signals or noises coming from behind, e. g. cars, are partially or entirely suppressed.

⚠ This hearing aid is not for children below 36 months. The usage of this device by children and individuals with cognitive impairment should be supervised at all times to ensure their safety. The hearing aid is a small device and contains small parts. Do not leave children and individuals with cognitive impairment unsupervised with this hearing aid. If swallowed, consult a physician or

hospital immediately as the hearing aid or its parts can cause choking!

⚠ Keep the charger out of reach of children, individuals with cognitive impairment and pets. If the drying capsule is swallowed, consult a physician or hospital immediately.

⚠ Only authorized personnel are allowed to open the Power Pack due to possible electrical hazard.

⚠ Do not cover the whole charger cases while charging, e.g. with a cloth etc.

⚠ The following is only applicable for persons with active implantable medical devices (i.e. pacemakers, defibrillators, etc.):

- Keep the wireless hearing aid at least 15 cm (6 inches) away from the active implant. If you experience any interference, do not use the wireless hearing aids and contact the manufacturer of the active implant. Please note that interference can also be caused by power lines, electrostatic discharge, airport metal detectors etc.

- Keep magnets at least 15 cm (6 inches) away from the active implant.
- If using a wireless accessory, consult safety information in your accessory user guide.

⚠ Use of this equipment adjacent to or stacked with other equipment should be avoided because it could result in improper operation. If such use is necessary, this equipment and the other equipment should be observed to verify that they are operating normally.

⚠ Use of accessories, transducers and cables other than those specified or provided by the manufacturer of this equipment could result in increased electromagnetic emissions or decreased electromagnetic immunity of this equipment and result in improper operation.

⚠ Portable RF communications equipment (including peripherals such as antenna cables and external antennas) should be used no closer than 30 cm (12 inches) to any

part of the hearing aids, including cables specified by the manufacturer. Otherwise, degradation of the performance of this equipment could result.

⚠ The USB port of the charger is to be used for the described purpose only.

⚠ For charger, use only EN60950-1 and/or EN60601-1 certified equipment with an output rating of 5 VDC. Min. 500 mA.

⚠ Hearing aids should not be fitted with domes / wax protection systems when used by clients with perforated eardrums, inflamed ear canals or otherwise exposed middle ear cavities. In these cases, we recommend the use of a custom earpiece. In the unlikely case that any part of this product should remain in the ear canal, it is strongly recommended to see a medical specialist for safe removal.

⚠ Avoid strong physical impacts to the ear when wearing a hearing aid with customized earpiece. The stability of customized earpieces is designed for normal use.

A strong physical impact to the ear (e.g. during sports) may cause the customized earpiece to break. This may lead to perforation of the ear canal or eardrum.

- ⚠ After mechanical stress or shock to the customized earpiece, please ensure that it is intact before placing it in the ear.
- ⚠ Special care should be exercised in wearing hearing aids when maximum sound pressure levels exceed 132 decibels. There may be a risk of impairing your remaining hearing. Speak with your hearing care professional to ensure the maximum output of your hearing aids is suitable for your particular hearing loss.
- ⚠ The majority of hearing aid users have a hearing loss for which a deterioration in hearing is not to be expected with regular use of a hearing aid in everyday situations. Only a small group of hearing aid wearers with hearing loss, may be at risk of deterioration in hearing after a long period of use.

Product safety

- ① These hearing aids are water resistant and not waterproof. They are designed to withstand normal activities and occasional accidental exposure to extreme conditions. Never immerse your hearing aid in water. These hearing aids are not specifically designed for extended periods of water submersion on a continual basis, that is worn in activities such as swimming or bathing. Always remove your hearing aid before these activities, as the hearing aid contains sensitive electronic parts.
- ① Never wash the microphone inputs. Doing so could cause it to lose its special acoustic features.
- ① Protect your hearing aid and charging accessories from heat (never leave near a window or in the car). Never use a microwave or other heating devices to dry your hearing aid or charging accessories (due to risk of fire or explosion). Ask your hearing care professional about suitable drying methods.

- ① Do not place the charging accessories close to an induction cooking surface. Conductive structures inside the charging accessories could absorb inductive energy resulting in thermal destruction.
- ① The dome should be changed every three months or when it becomes stiff or brittle. This is to prevent the dome from detaching from the tube spout during insertion into or removal from the ear.
- ① Do not drop your hearing aid or charging accessories. Dropping onto a hard surface can damage your hearing aid or charging accessories.
- ① Charger, Power Pack and power supply must be protected against shocks. If the charger, Power Pack or power supply is damaged after a shock, the devices must not be used anymore.
- ① Store your hearing aids in the charger if you are not using them for a long period of time.
- ① Special medical or dental examination

including radiation described below, may adversely affect the correct functioning of your hearing aids. Remove and keep them outside the examination room/area before undergoing:

- Medical or dental examination with X-ray (also CT scan).
 - Medical examinations with MRI/NMRI scans, generating magnetic fields. Hearing aids do not need to be removed when passing security gates (airports etc.). If X-ray is used at all, it will be in very low doses, and will not affect the hearing aids.
- ① Do not use your hearing aid in areas where electronic equipment is prohibited.
 - ① The hearing aids have to be dry before charging. Otherwise the charging reliability cannot be guaranteed.
 - ① Only use approved chargers and Power Pack described in this user guide for charging your hearing aids, otherwise the devices may be damaged.

- ① Your hearing aid(s) contain a lithium-ion battery and the Power Pack contains a lithium-polymer battery, both with a Watt hour rating <20 Which have been tested according to UN 38.3 of the “UN Manual of Tests and Criteria” and should be shipped in accordance with all the rules and regulations on the safe shipment of lithium-ion and lithium-polymer batteries.
- ① Your hearing aids use the most modern components to provide the best possible sound quality in every listening situation. However, communication devices such as digital mobile phones can create interference (a buzzing sound) in hearing aids. If you experience interference from a mobile phone being used close by, you can minimize this interference in a number of ways. Switch your hearing aids to another program, turn your head in a different direction or locate the mobile phone and move away from it.

- ① These hearing aids are classified IP68 (depth of 1 meter for 60 minutes) and designed to be used in all daily life situations. Therefore you do not have to worry about getting the hearing aids exposed to a rain shower or sweat. However, these hearing aids are not intended to be used in water activities that includes chlorinated water, soap, salt water or other liquids with a chemical content.

Mobile phone compatibility rating

Some hearing aid users have reported a buzzing sound in their hearing aids when they are using mobile phones, indicating that the mobile phone and hearing aids may not be compatible. According to the ANSI C63.19 standard (ANSI C63.19-2011 American National Standard Methods of Measurement of Compatibility Between Wireless Communications Devices and Hearing Aids), the compatibility of particular hearing aids and a mobile phone can be predicted by adding the rating for the hearing aid immunity to the rating for the mobile phone emissions. For example, the sum of the hearing aid rating of 4 (M₄) and a telephone rating of 3 (M₃) would result in a combined rating of 7. Any combined rating that equals at least 5 would provide “normal use”; a combined rating of 6 or greater would indicate “excellent performance.”

The immunity of these hearing aids is at least M₄. The equipment performance measurements, categories and system classifications are based upon the best information available but cannot guarantee that all users will be satisfied.

- ① The performance of the individual hearing aids may vary with individual mobile phones. Therefore, please try these hearing aids with your mobile phone or, if you are purchasing a new phone, please be sure to try it with your hearing aids prior to purchase.

Tinnitus masker

Tinnitus masker uses broadband noise to provide temporary relief of tinnitus.

Tinnitus masker warnings

- ⚠ The tinnitus masker is a broadband sound generator. It provides a means of sound enrichment therapy that can be used as part of a personalized tinnitus management program to provide temporary relief from tinnitus.
- ⚠ The underlying principle of sound enrichment is to provide supplementary noise stimulation which can help defocus your attention from your tinnitus and avoid negative reactions. Sound enrichment, coupled with instructional counseling, is an established approach to managing tinnitus.
- ⚠ Air conduction hearing aids with the tinnitus masker are to be fitted by a hearing care professional familiar with the diagnosis and management of tinnitus.

- ⚠ Should you develop any side effects while using the tinnitus masker, such as headaches, nausea, dizziness or heart palpitations or experience a decrease in auditory function such as decreased loudness tolerance, worsening of tinnitus, or speech not as clear, you should discontinue use of the device and seek medical attention.
- ⚠ The volume of the tinnitus masker can be set to a level which could lead to permanent hearing damage when used for a prolonged period of time. Should the tinnitus masker be set to such a level in your hearing aids, your hearing care professional will advise you of the maximum amount of time per day you should use the tinnitus masker. The tinnitus masker should never be used at uncomfortable levels.

Important information

- ① The tinnitus masker generates sounds that are used as part of your personalized temporary tinnitus management program to provide relief from tinnitus. It should always be used as prescribed by a hearing care professional who is familiar with the diagnosis and treatment of tinnitus.
- ① Good health practice requires that a person reporting tinnitus have a medical evaluation by a licensed ear physician before using a sound generator. The purpose of such an evaluation is to ensure that medically treatable conditions, which may be causing tinnitus, are identified and treated prior to using a sound generator.
- ① The tinnitus masker is intended for adults 18 years of age or older who have both hearing loss and tinnitus.

9. Operating, transport and storage conditions

The product is designed such that it functions without problems or restrictions if used as intended, unless otherwise noted in these user guides.

Please ensure to use, charge, transport and store the hearing aids and the Power Pack according to the following conditions:

	Use	Charging	Transport	Storage
Temperature				
Maximum range	+5° to +40°C (41° to 104°F)	+5° to +40°C (41° to 104°F)	-20° to +60°C (-4° to 140°F)	-20° to +60°C (-4° to 140°F)
Recommended range	+5° to +40°C (41° to 104°F)	+7° to +32°C (45° to 90°F)	0° to +20°C (32° to 68°F)	0° to +20°C (32° to 68°F)
Humidity				
Maximum range	0% to 85% (non condensing)	0% to 85% (non condensing)	0% to 70%	0% to 70%
Recommended range	0% to 60% (non condensing)	0% to 60% (non condensing)	0% to 60%	0% to 60%
Atmospheric pressure	500 hPa to 1060 hPa	500 hPa to 1060 hPa	500 hPa to 1060 hPa	500 hPa to 1060 hPa

10. Information and explanation of symbols



With the CE symbol, Sonova AG confirms that this product – including accessories – meets the requirements of the Medical Devices Regulation (EU) 2017/745 as well as the Radio Equipment Directive 2014/53/EU. The numbers after the CE symbol correspond to the code of certified institutions that were consulted under the above-mentioned regulation and directive.



This symbol indicates that the products described in these user instructions adhere to the requirements for an applied part of Type B of EN 60601-1. The surface of the hearing aid is specified as applied part of Type B.



Indicates the medical device manufacturer, as defined in EU Directive 93/42/EEC.



Indicates the Authorized representative in the European Community. The EC REP is also the importer to the European Union.



This symbol indicates that it is important for the user to read and take into account the relevant information in these user guides.



This symbol indicates that it is important for the user to pay attention to the relevant warning notices in this user guide.



Important information for handling and product safety.



Copyright symbol



This symbol confers that the electromagnetic interference from the device is under limits approved by the US Federal Communications Commission.



The Bluetooth® word mark and logos are registered trademarks owned by Bluetooth SIG, Inc. and any use of such marks by Sonova is under license. Other trademarks and trade names are those of their respective owners.



Japanese mark for certified radio equipment



Serial number



Indicates the manufacturer's catalogue number so that the medical device can be identified



Indicates that the device is a medical device.



This symbol indicates that it is important for the user to read and take into account the relevant information in this user guide

Moxi

Moxi is a trademark of Sonova.

IP68 IP Rating = Ingress Protection Rating. IP68 rating indicates that the hearing aid is water and dust resistant. It survived continuous immersion in 1 meter of water for 60 minutes and 8 hours in a dust chamber as per the IEC60529 standard



Date of manufacture



Temperature during transportation and storage: -20° to $+60^{\circ}$ Celsius
(-4° to $+140^{\circ}$ Fahrenheit)



Humidity during storage: 0% to 70%, if not in use.



Atmospheric pressure during transportation and storage: 500 hPa to 1060 hPa



During transportation keep dry.



The symbol with the crossed-out garbage bin is to make you aware that this device as well as chargers may not be thrown away as normal household waste. Please dispose of old or unused devices, at waste disposal sites intended for electronic waste, or give your device to your hearing care professional for disposal. Proper disposal protects the environment and health.



This symbol indicates that it is important for the user to pay attention to the relevant warning notices related to batteries in these user guides.

Symbols applicable to the European power supply only



Power supply with double isolation



Device designed for indoor use only.



Safety isolating transformer, short circuit proof

11. Compliance information

Declaration of conformity

Hereby, Sonova AG declares that this product meets the requirements of the Medical Devices Regulation MDR2017/745 and complies with Radio Equipment Directive 2014/53/EU.

The full text of the EU Declaration of Conformity can be obtained from the manufacturer via the following web address: www.sonova.com/en/certificates.



R-NZ

Australia/New Zealand:

Indicates a device's compliance with applicable Radio Spectrum Management's (RSM) and Australian Communications and Media Authority (ACMA) regulatory arrangements for the legal sale in New Zealand and Australia. The compliance label R-NZ is for radio products supplied in the New Zealand market under conformity level A1.

The hearing aid described in this user guide is certified under:

Standard hearing system

	USA - FCC ID:	Canada - IC:
Moxi B-RT	KWC-MRP	2262A-MRP
Moxi B-R	KWC-MRP	2262A-MRP

Notice 1

This device complies with Part 15 of the FCC Rules and with RSS-210 of Industry Canada. Operation is subject to the following two conditions:

- 1) this device may not cause harmful interference, and
- 2) this device must accept any interference received, including interference that may cause undesirable operation.

Notice 2

Changes or modifications made to this device not expressly approved by Sonova AG may void the FCC authorization to operate this device.

Notice 3

This device has been tested and found to comply with the limits for a Class B digital device, pursuant to Part 15 of the FCC Rules and ICES-003 of Industry Canada. These limits are designed to provide reasonable protection against harmful interference in a residential installation. This device generates, uses and can radiate radio frequency energy and, if not installed and used in accordance with the instructions, may cause harmful interference to radio communications. However, there is no guarantee that interference will not occur in a particular installation. If this device does cause harmful interference to radio or television reception, which can be determined by turning the equipment off and on, the user is encouraged to try to correct the interference by one or more of the following measures:

- Reorient or relocate the receiving antenna
- Increase the separation between the equipment and receiver
- Connect the device into an outlet on a circuit different from that to which the receiver is connected
- Consult the dealer or an experienced radio/TV technician for help

Radio information of your wireless hearing aid

Antenna type	Resonant loop antenna
Operation frequency	2.4 GHz – 2.48 GHz
Modulation	GFSK, Pi/4 DQPSK, GMSK
Radiated power	< 2.5mW

Bluetooth®

Range	~1m
Bluetooth	4.2 Dual-Mode
Profiles supported	HFP (Hands-free profile), A2DP

Compliance with emission and immunity standards

Emission standards	EN 60601-1-2
	IEC 60601-1-2
	EN 55011
	CISPR11
	CISPR32
	CISPR25
	EN 55025

Immunity standards	EN 60601-1-2
	IEC 60601-1-2
	EN 61000-4-2
	IEC 61000-4-2
	EN IEC 61000-4-3
	IEC 61000-4-3
	EN 61000-4-4
	IEC 61000-4-4
	EN 61000-4-5
	IEC 61000-4-5
	EN 61000-4-6
	IEC 61000-4-6
	EN 61000-4-8
	IEC 61000-4-8
	EN 61000-4-11
	IEC 61000-4-11
	IEC 60601-1
	ISO 7637-2

12. Warning to hearing aid dispensers (to comply with the U.S. Food and Drug Administration (FDA) regulations)

A hearing aid dispenser should advise a prospective hearing aid user to consult promptly with a licensed physician (preferably an ear specialist) before dispensing a hearing aid if the hearing aid dispenser determines through inquiry, actual observation, or review of any other available information concerning the prospective user, that the prospective user has any of the following conditions: (i) Visible congenital or traumatic deformity of the ear. (ii) History of active drainage from the ear within the previous 90 days. (iii) History of sudden or rapidly progressive hearing loss within the previous 90 days. (iv) Acute or chronic dizziness. (v) Unilateral hearing loss of sudden or recent onset within the previous 90 days. (vi) Audiometric air-bone gap equal to or greater than 15 decibels at 500 hertz (Hz), 1,000 Hz, and 2,000 Hz. (vii) Visible evidence of significant cerumen accumulation or a foreign body in the ear canal. (viii) Pain or discomfort in the ear.

Important notice for prospective hearing aid users

Good health practice requires that a person with a hearing loss have a medical evaluation by a licensed physician (preferably a physician who specializes in diseases of the ear) before purchasing a hearing aid.

Licensed physicians who specialize in diseases of the ear are often referred to as otolaryngologists, otologists or otorhinolaryngologists. The purpose of medical evaluation is to assure that all medically treatable conditions that may affect

hearing are identified and treated before the hearing aid is purchased. Following the medical evaluation, the physician will give you a written statement that states that your hearing loss has been medically evaluated and that you may be considered a candidate for a hearing aid. The physician will refer you to an audiologist or a hearing aid dispenser, as appropriate, for a hearing aid evaluation. The audiologist or hearing aid dispenser will conduct a hearing aid evaluation to assess your ability to hear with and without a hearing aid. The hearing aid evaluation will enable the audiologist or dispenser to select and fit a hearing aid to your individual needs. If you have reservations about your ability to adapt to amplification, you should inquire about the availability of a trial-rental or purchase-option program. Many hearing aid dispensers now offer programs that permit you to wear a hearing aid for a period of time for a nominal fee after which you may decide if you want to purchase the hearing aid. Federal law restricts the sale of hearing aids to those individuals who have obtained a medical evaluation from a licensed physician. Federal law permits a fully informed adult to sign a waiver statement declining the medical evaluation for religious or personal beliefs that preclude consultation with a physician. The exercise of such a waiver is not in your best health interest and its use is strongly discouraged.

Children with hearing loss

In addition to seeing a physician for a medical evaluation, a child with a hearing loss should be directed to an audiologist for evaluation and rehabilitation since hearing loss may cause problems in language development and the educational and social growth of a child. An audiologist is qualified by training and experience to assist in the evaluation and rehabilitation of a child with a hearing loss.

Your feedback

Record your specific needs or concerns and bring to your first office visit after getting your hearing aids.

This will help your hearing care professional to address your needs.

☐ _____

☐ _____

☐ _____

☐ _____

☐ _____

Additional notes

Australian Sponsor :
Sonova Australia Pty Ltd.
12 Inglewood Place,
Norwest NSW 2153
Australia



And importer for European Union :
Sonova Deutschland GmbH
Max-Eyth-Str. 20
70736 Fellbach-Oeffingen, Germany
Pat. www.sonova.com/en/intellectualproperty
For a listing of Unitron group
companies, please visit
www.unitron.com

Distributor



Manufacturer:

Sonova AG

Laubisrütistrasse 28

CH-8712 Stäfa

Switzerland

unitron.com



sonova



7

613389525229